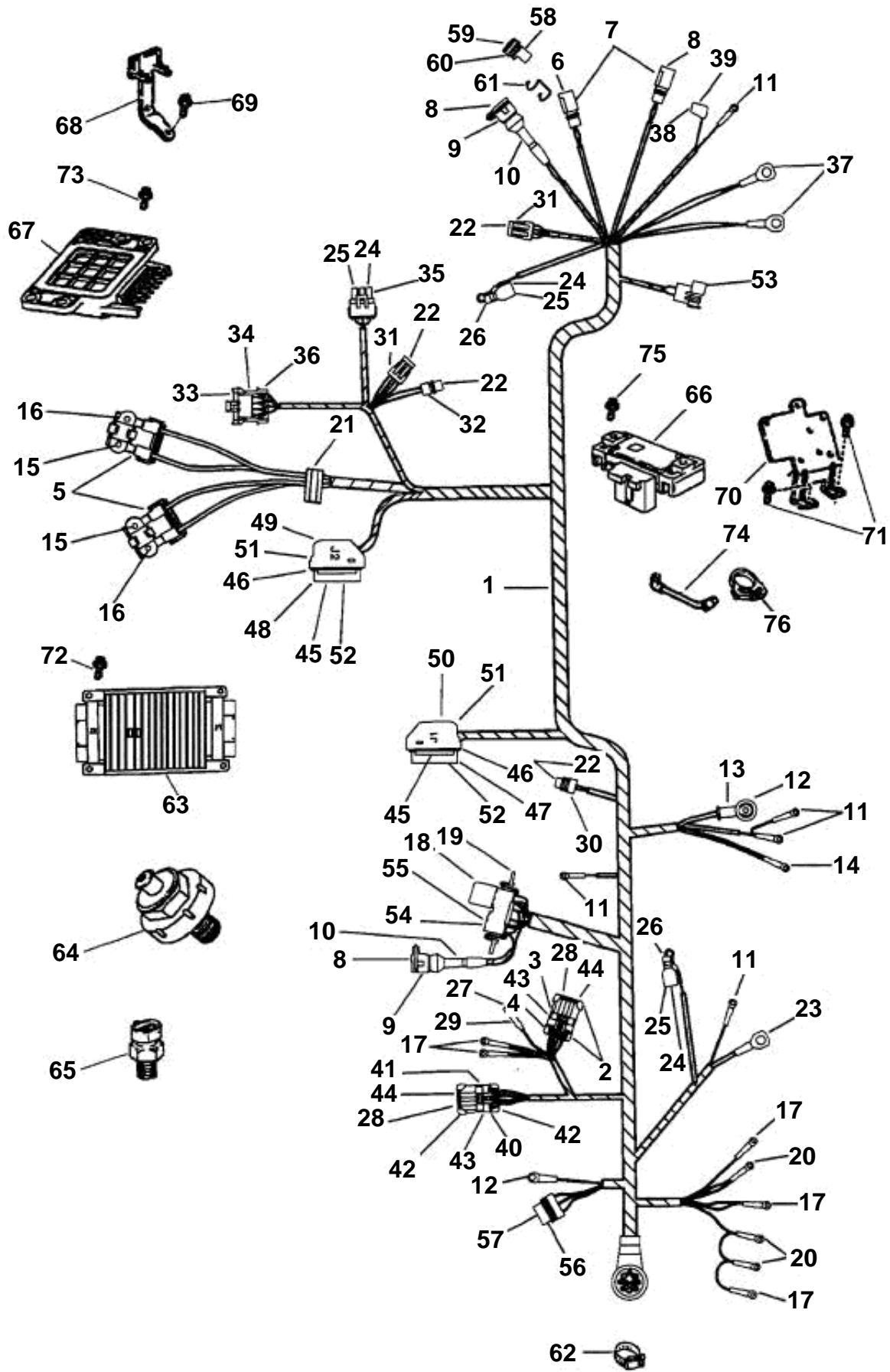


ENGINE WIRE HARNESS, Gi



ENGINE WIRE HARNESS, Gi

REF	PART NO.	QTY	DESCRIPTION	NOTES
1	3858131	1	Cable harness	
2	3855263	2	Cap, 4 pin connector	
3	3855240	1	Connector, 4 pin	
4	3855239	1	Connector, 4 pin	
5	3855250	2	Connector, Injector	
6	3852229	4	Cable terminal, Pin	
7	3853565	2	Connector, 2 pin	
8	3853679	4	Cable terminal	
9	3855021	2	Housing	
10	3853681	2	Cover, Fuel pump	
11	3852233	5	Cable terminal	
12	3852107	2	Cable terminal	
13	3852130	1	Rubber cap, Alternator	
14	3852036	1	Cable terminal, Alternator ground	
15	3855237	4	Cable terminal, Injector	
16	3855238	4	Seal, Injector	
17	3852235	5	Cable terminal	
18	3857533	2	Relay, Fuel pump	
19	3852210	1	Bracket, Relay	
20	3854245	3	Cable terminal	
21	3855241	1	Grommet	
22	3855242	13	Cable terminal	
23	3855022	1	Cable terminal, Starter	
24	3855023	3	Cable terminal, Sensor	
25	3853478	8	Seal, Terminal	
26	3853480	1	Terminal casing, Knock sensor	
27	3855024	1	Cable terminal, Ignition cutoff	
28	3855243	9	Seal, Connector	
29	3855025	1	Cable sleeve, Terminal	
30	3855244	1	Connector, Temperature switch	
31	3855027	2	Cable terminal, 4 terminal	
32	3855245	1	Connector, 3 terminal	
33	3855246	1	Cable terminal, Spark control	
34	3855247	1	Connector, Spark control	
35	3855248	1	Connector, MAP sensor	
36	3855249	1	Connector, 5 pin connector	
37	3852527	2	Cable terminal, Ground	
38	3852084	1	Cable terminal, Oil switch	
39	3853320	1	Cover, Terminal	
40	3855251	1	Connector	
41	3855252	1	Connector	
42	3855253	2	Cap, Connector	
43	3855267	9	Cable terminal	
44	3855254	19	Plug	
45	3855255	2	Connector, Connector	
46	3855256	2	Seal	
47	3855257	1	Connector, Connector, J1 module	
48	3855258	1	Connector, Connector, J2 module	
49	3855259	1	Connector housing, J2 module	
50	3855260	1	Connector housing, J1 module	
51	3855261	28	Plug	
52	3855262	36	Cable terminal	
53	3854244	1	Cable, Ignition coil	
54	3852246	5	Cable terminal, Relay	
55	3852247	3	Cable terminal, Relay	
56	3854192	1	Connector	
57	3852254	4	Cable terminal, Starter solenoid	
58	3855178	1	Connector, Master/slave	
59	3852230	2	Plug	
60	3853564	1	Connector	
61	3852237	1	Retainer, Connector	
62	3853786	1	Clamp, Instrument cable	
63	3857324	1	Ecu, Electronic control	
64	3854905	1	Sensor	

ENGINE WIRE HARNESS, Gi

REF	PART NO.	QTY	DESCRIPTION	NOTES
65	3850397	1	Ect sensor	
66	3850396	1	Sender	
67	3854672	1	Control unit	
68	3850272	1	Bracket, Knock module	
69	3852115	2	Screw, Knock module bracket	
70	3851990	1	Bracket, ECM and MAP sensor	
71	3852115	2	Screw, Bracket to adapter	
72	3855578	4	Screw, ECM to bracket	
73	3852115	2	Screw, Knock module to bracket	
74	3850688	4	Hose, MAP sensor	Cut to length
75	3852115	2	Screw, MAP sensor to bracket	
76	3852172	1	Clamp, Hose, MAP sensor	